

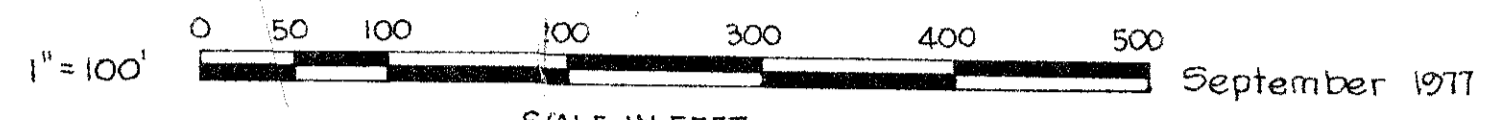
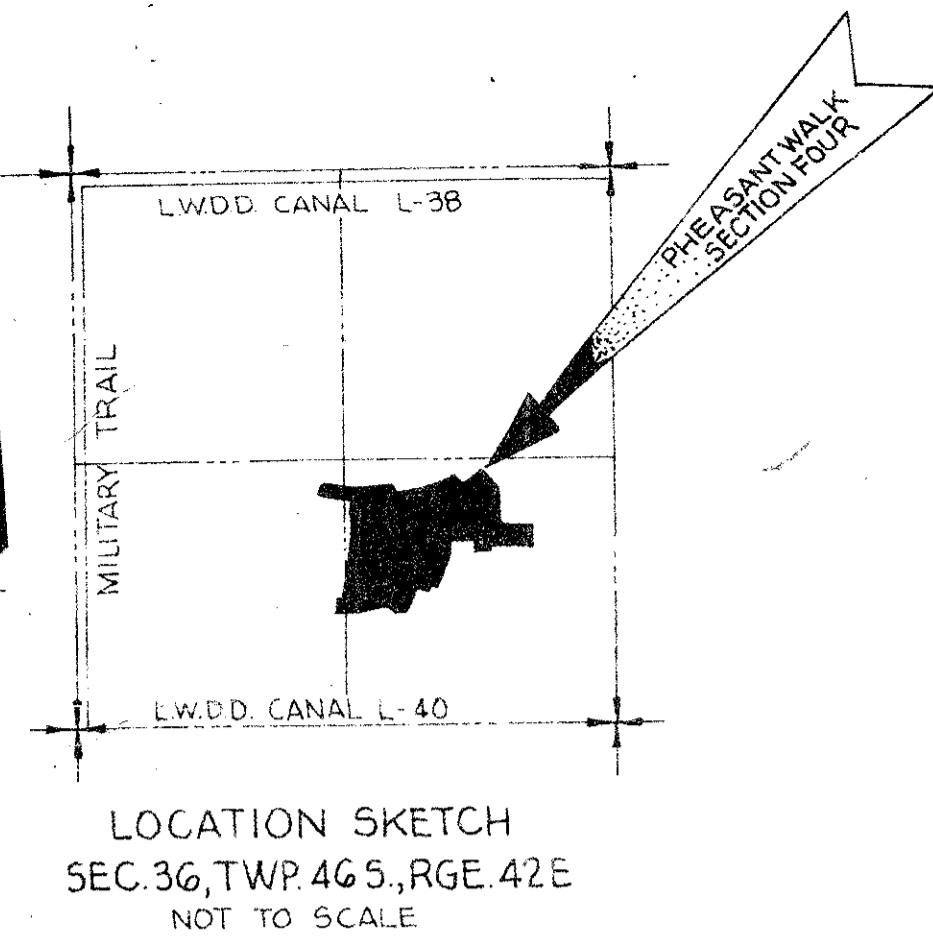
# PHEASANT WALK SECTION FOUR

A PARCEL OF LAND IN THE SOUTH ONE-HALF OF SECTION 36, TOWNSHIP 46 SOUTH, RANGE 42 EAST, PALM BEACH COUNTY, FLORIDA AND ALSO A REPLAT OF TRACT D, PHEASANT WALK SECTION THREE, PLAT BOOK 33, PAGES 15 & 16, PALM BEACH COUNTY RECORDS

State Of Florida  
 County Of Palm Beach  
 This Plat Was Filed For  
 Record At \_\_\_\_\_ On The  
 \_\_\_\_\_ Day Of \_\_\_\_\_  
 1978 And Duly Recorded  
 In Plat Book \_\_\_\_\_ Page

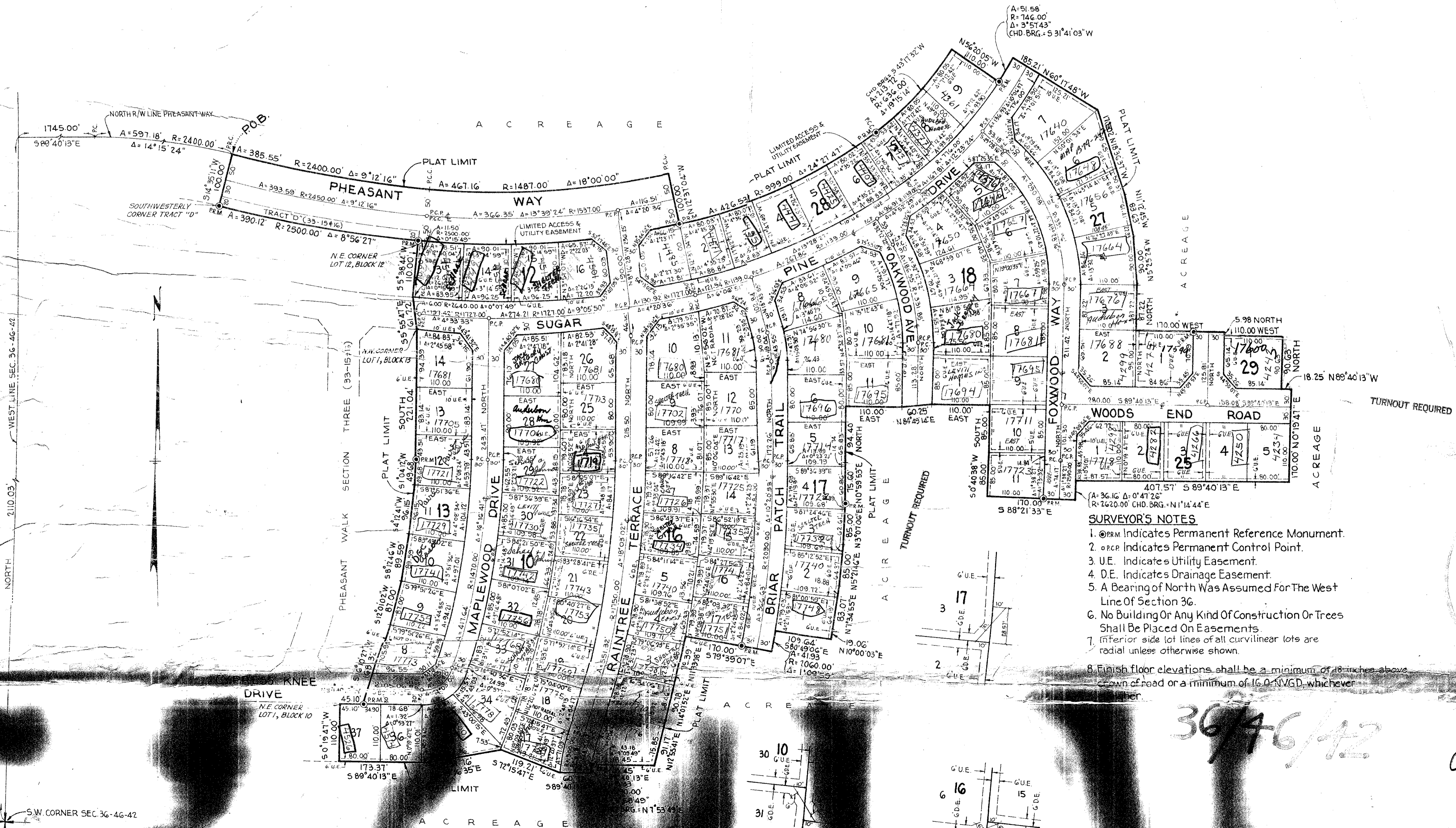
John B. Dunkle  
 Clerk Of Circuit Court

By: \_\_\_\_\_



SHEET TWO OF TWO

Prepared By T.D. Bickham In The Offices Of:  
 ARTHUR V. STROCK & ASSOCIATES, INC.  
 Consulting Engineers - Land Surveyors  
 Deerfield Beach - Delray Beach, Florida  
 Comm. No. 4853-0 F.B. 257



- SURVEYOR'S NOTES**
1.  $\odot$  PRM Indicates Permanent Reference Monument.
  2.  $\odot$  PCP Indicates Permanent Control Point.
  3. U.E. Indicates Utility Easement.
  4. D.E. Indicates Drainage Easement.
  5. A Bearing of North Was Assumed For The West Line Of Section 36.
  6. No Building Or Any Kind Of Construction Or Trees Shall Be Placed On Easements.
  7. Interior side lot lines of all curvilinear lots are radial unless otherwise shown.
  8. Finish floor elevations shall be a minimum of 18 inches above crown of road or a minimum of 16.0 NAVGD, whichever is higher.

37

DWN. BY: T.D.B.  
 CALC. BY: S.B.E.C.  
 CKD. BY:

PHEASANT WALK SECTION #4

EASEMENT DETAILS SCALE: 1"=40'

36/46/42

0293

34  
2